

The Flyer



Issue 50 / Autumn 2021

In this issue; Junior conservationist Matilda feeds the Owlets | Painting a Barn Owl Peeble | Brain Teasers | Identifying Butterflies



Malilda feeds Greta and Jane our newly arrived rescued Owlets

Greta and Jane came into the Barn Owl Trust after they were discovered when a landowner was dismantling a bale stack near Crediton in Devon in June. We arranged for an experienced rehabilitator nearby to take them overnight until we could get them to Waterleat.

These two nestlings arrived here on July 1st and went straight into a brooder which would keep them warm.

They were initially fed several times day and night but as they progressed this dropped to a couple of times a day, and once they could feed themselves, we made sure that they always had food if they needed it.

On July 26th they were moved to the nestbox provision in the end of the barn and fed there. This is called the young brood release method; birds are able to leave the provision as soon as they can get to the hole, but are supported during their gradual release, with food put out for them every day until they eventually disperse and become independent.

They are just beginning to venture outside and explore their surroundings.



Greta and Jane (named after Greta Thunberg Swedish environmental activist and Jane Goodall English primatologist)



Reg Charity No: 299 835
www.barnowltrust.org.uk

Waterleat, Ashburton
Devon TQ13 7HU

Pebble Painting - Step by Step

PAINT A BARN OWL ONTO A PEBBLE OR STONE

YOU WILL NEED: A Clean Pebble or Stone || A Soft Pencil | Your Favourite Barn Owl Picture to Copy | White, Black, Brown & Blue Acrylic Paints | Small and Large Paintbrushes

ADULT SUPERVISION REQUIRED



1. Find a pebble or small-ish stone that is rounded in shape. This one is about 9cm in height. Scrub it off with a brush and pat dry.



2. Mix up some white acrylic paint in a little pot or saucer. Using your large paintbrush cover it all over with paint. Wait for it to dry then give it another coat of white paint.



3. When completely dry using your Barn Owl picture for reference (or use this final picture) draw your Barn Owl using your soft pencil. I started with the eyes and face.



4. Using your small paintbrush and brown paint your feathers around the wing and face. Then carefully paint in your eyes using black.



5. Use a light brown for the feathers around the beak and face. Carefully paint the white into the eyes using your small paintbrush. Mix together white with a little blue for the shadows on the face.



6. Paint in the beak with a darker grey. Finally making little strokes across the chest area with light brown, dark brown and grey for shadow. Your Barn Owl is finished!

Brain Teasers

AUTUMN WILDLIFE WORDSEARCH

Can you find all the words listed above hidden in the wordsearch.
Words go sideways, up and down, diagonally and backwards.



H	N	S	C	A	R	E	C	R	O	W	B
T	I	G	N	M	U	T	U	A	S	R	E
P	P	B	I	H	A	R	N	C	F	U	R
I	D	H	E	D	G	E	H	O	G	D	R
N	S	C	L	R	D	L	C	R	M	P	I
E	S	B	M	A	N	C	F	N	A	K	E
C	O	B	W	E	B	A	I	B	I	I	S
O	P	T	A	S	L	H	T	E	A	F	N
N	A	R	F	L	E	D	G	I	N	G	B
E	L	E	A	V	E	S	G	C	O	L	D
R	P	U	M	P	K	I	N	O	T	N	L

ACORN, AUTUMN, BERRIES, COBWEB, COLD, FALL, FLEDGING,
HEDGEHOG, HIBERNATION, LEAVES, PINECONE, PUMPKIN,
RAIN, SCARECROW

It's a Tawny Owl Word Jumble!

I C B N H N R G A

Can you unjumble the letters above to reveal a Tawny Owl related word or phrase. Here's a clue... it appears somewhere else on this flyer!

Can you spot any of these Butterflies?

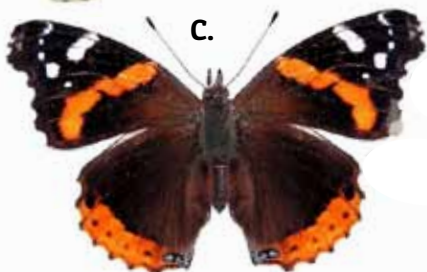
Autumn is a great time to see butterflies as they feed themselves up ready for hibernation. When you go exploring see if you can find all these butterflies. Can you match their names on the left with their pictures?



A.



B.



C.



D.

E.



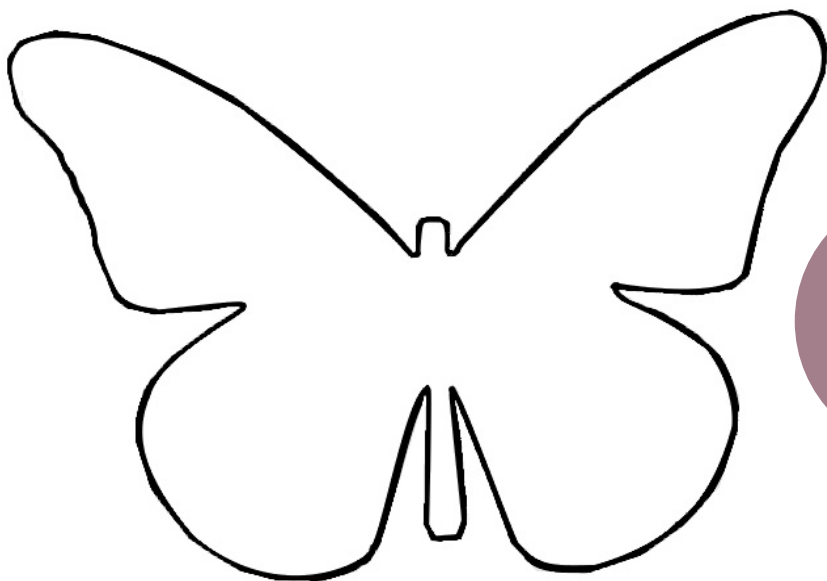
A) Small Tortoiseshell Butterfly

B) Orange Tip Butterfly

C) Red Admiral Butterfly

D) Peacock Butterfly

E) Common Blue Butterfly



Create
your own
Butterfly!